

JelMarker™ Image Reading and Conversion Software

JelMarker

Converts Slab Gel Fragment Data to Trace (Electropherogram) .scf files



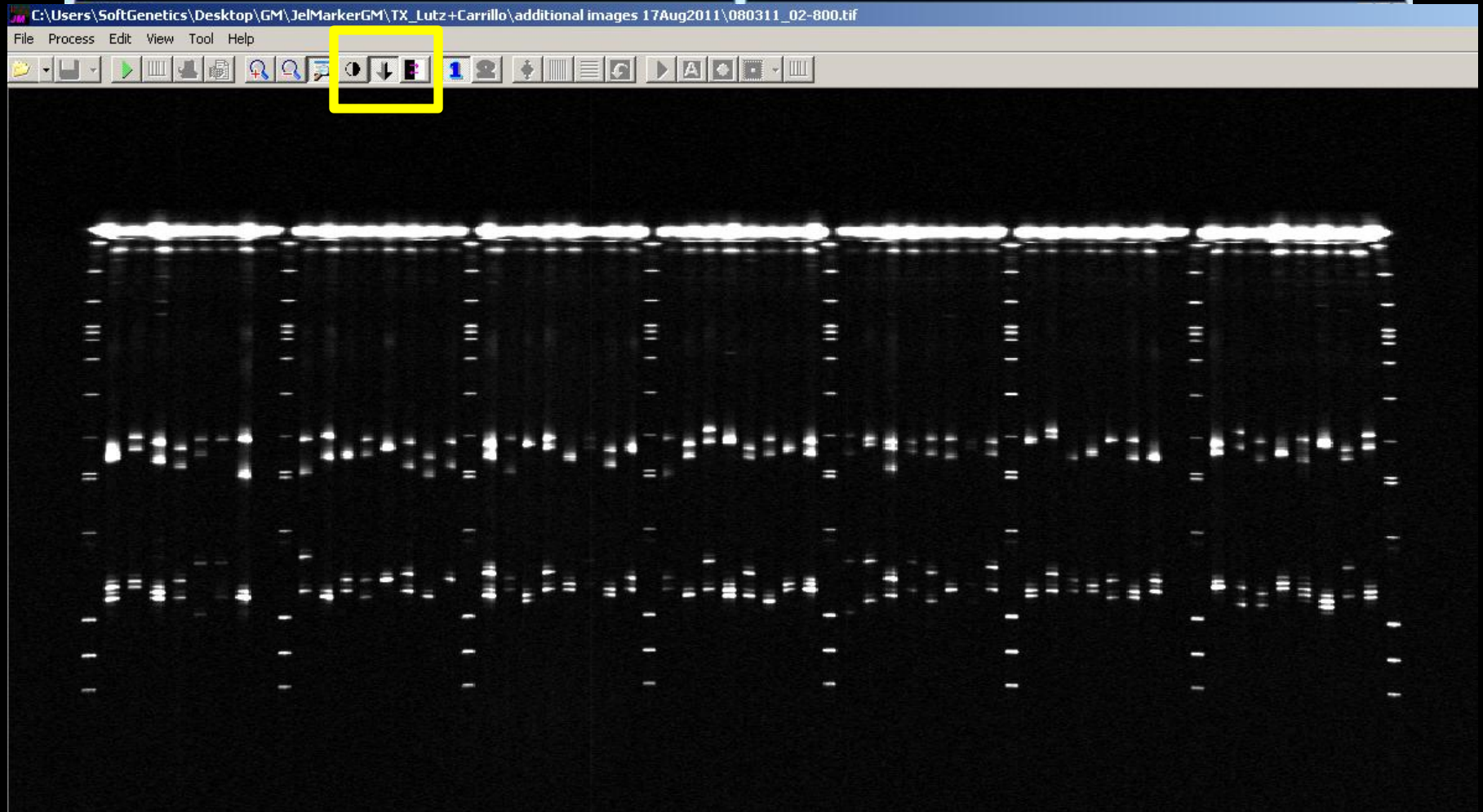
GeneMarker®

Import JelMarker Results into GeneMarker Software

- **Automated Size and Allele Calling**
- **Filtering Stutter and Artifacts**

- **Please Review Microsatellite Tools in GeneMarker Webinar for Additional Post-Genotyping Applications:**
 - Merging results of two or more multiplexes – complete genotype
 - Cluster Analysis/Dendrograms
 - Kinship Analysis and Database Searching

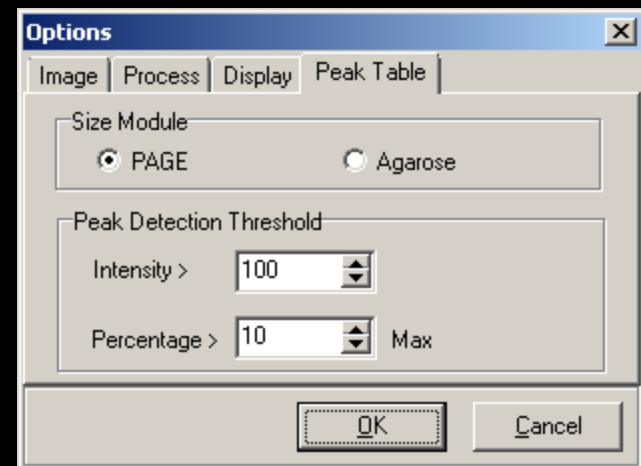
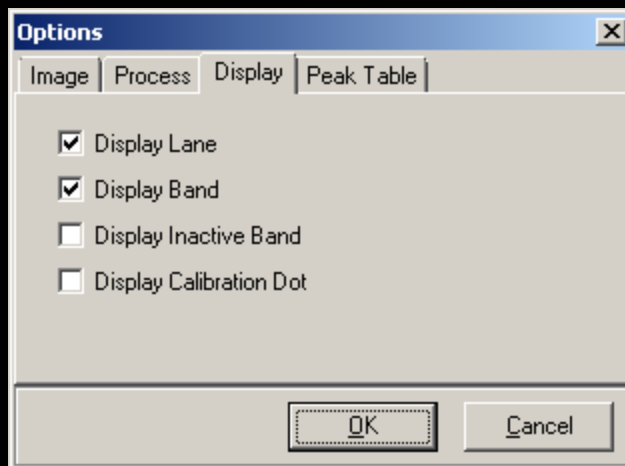
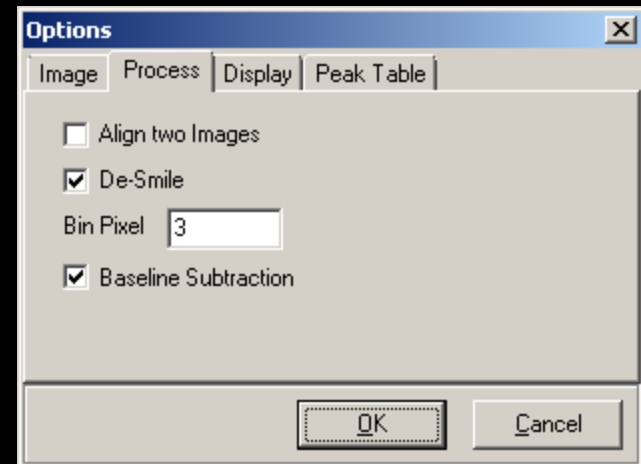
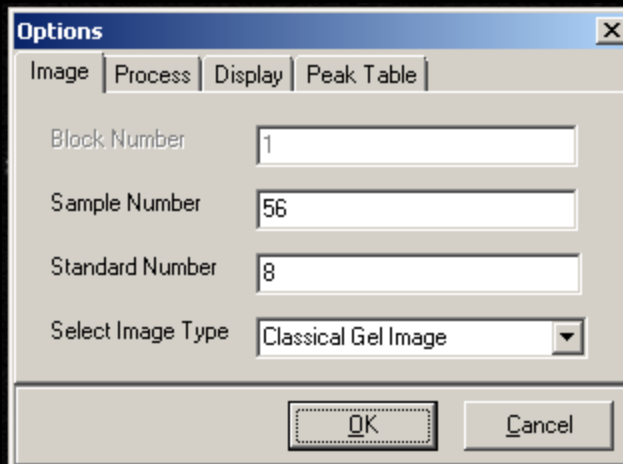
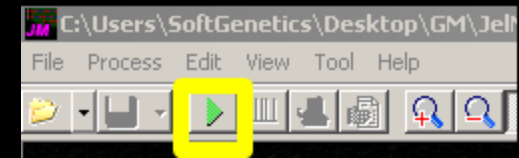
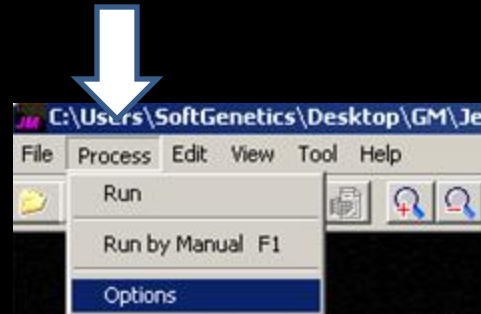
Import Image File Into JelMarker – Display with small fragments at top



*Gel Imaging and
Conversion Software*

Auto-Lane Tracking

User-friendly
interface to select
analysis parameters



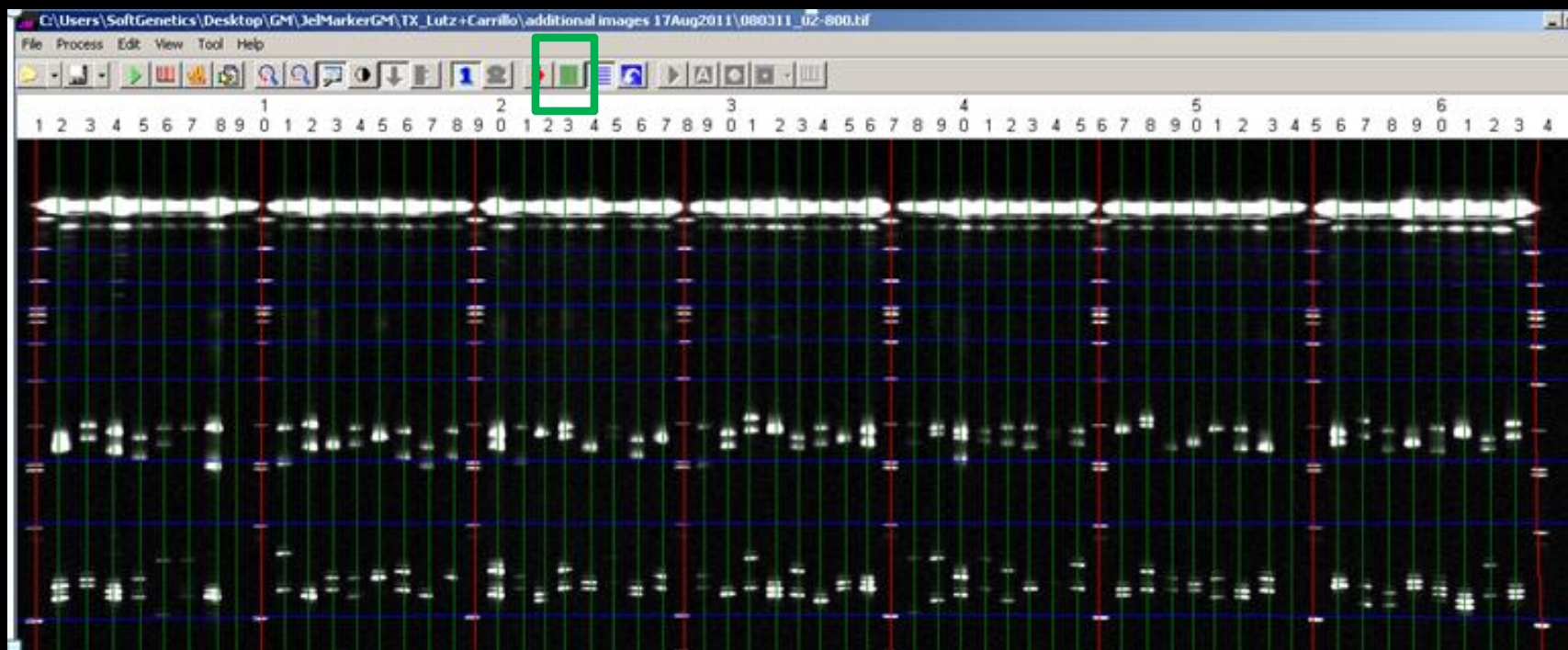
Vertical and Horizontal Lines Displayed over Lanes and Major Bands

Activate Lane (vertical red and green lines)

- Confirm Lane tracking by selecting the green icon and using the mouse to center any vertical lines that are off-center in the lanes

Denote size standard lanes:

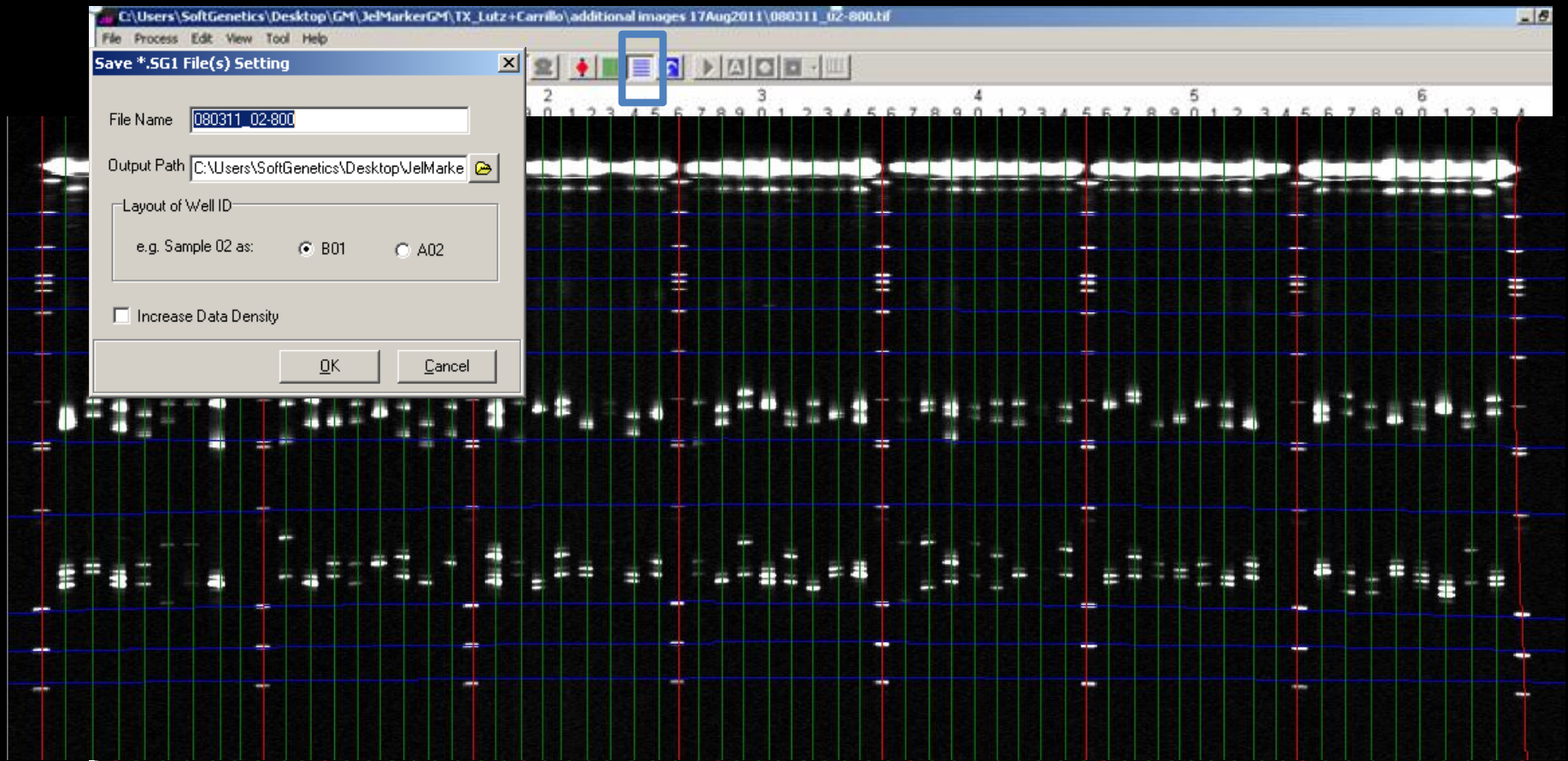
Right mouse click – select Set as Standard (red line)



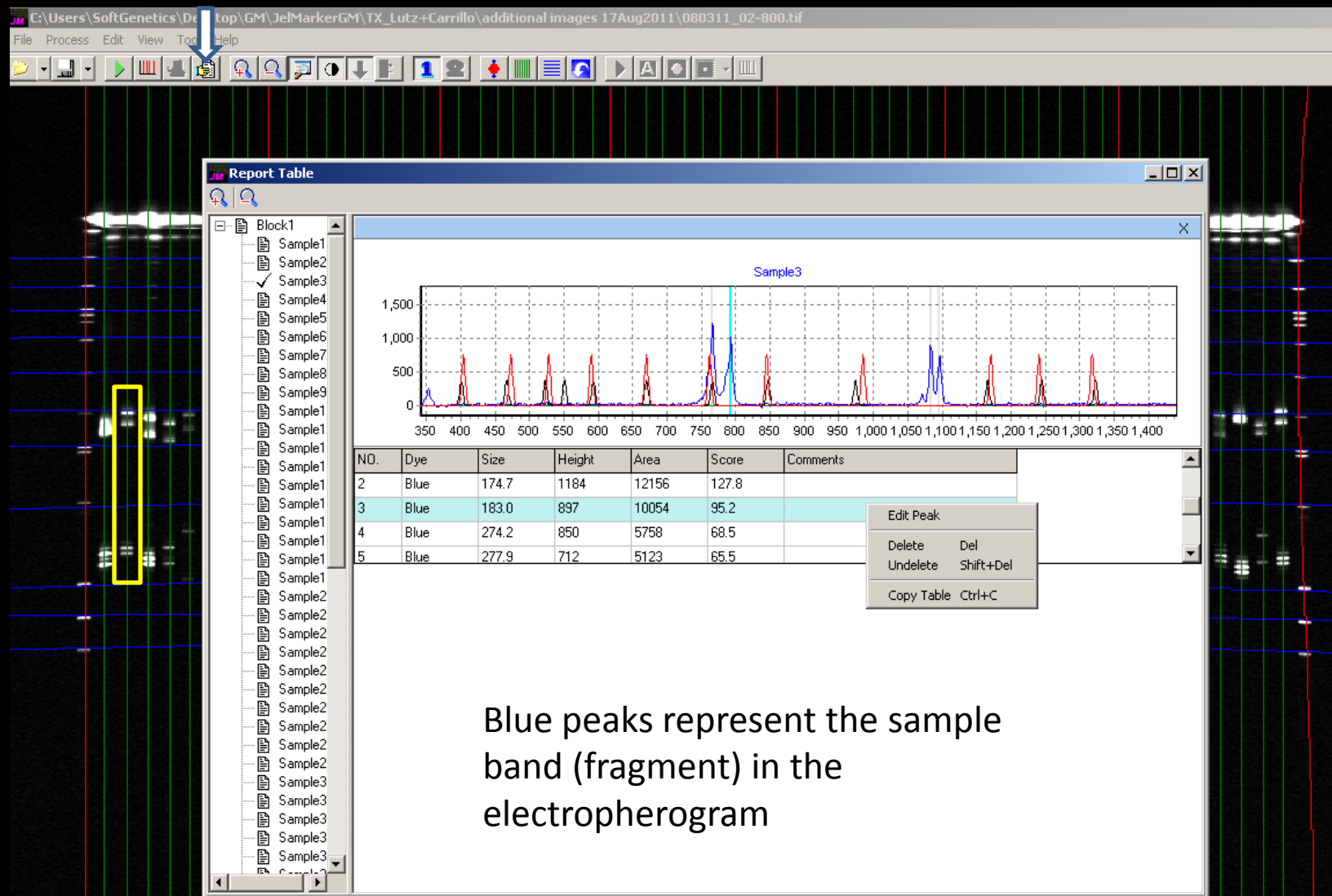
Correcting for Lane-to-Lane Variation (Gel 'Smile')

Use the Blue Icon and then Right Mouse Click to Align Vertical Blue Lines with size bands across the gel

Right Mouse click at the center – Add Edit Point – Bow the line and release the mouse

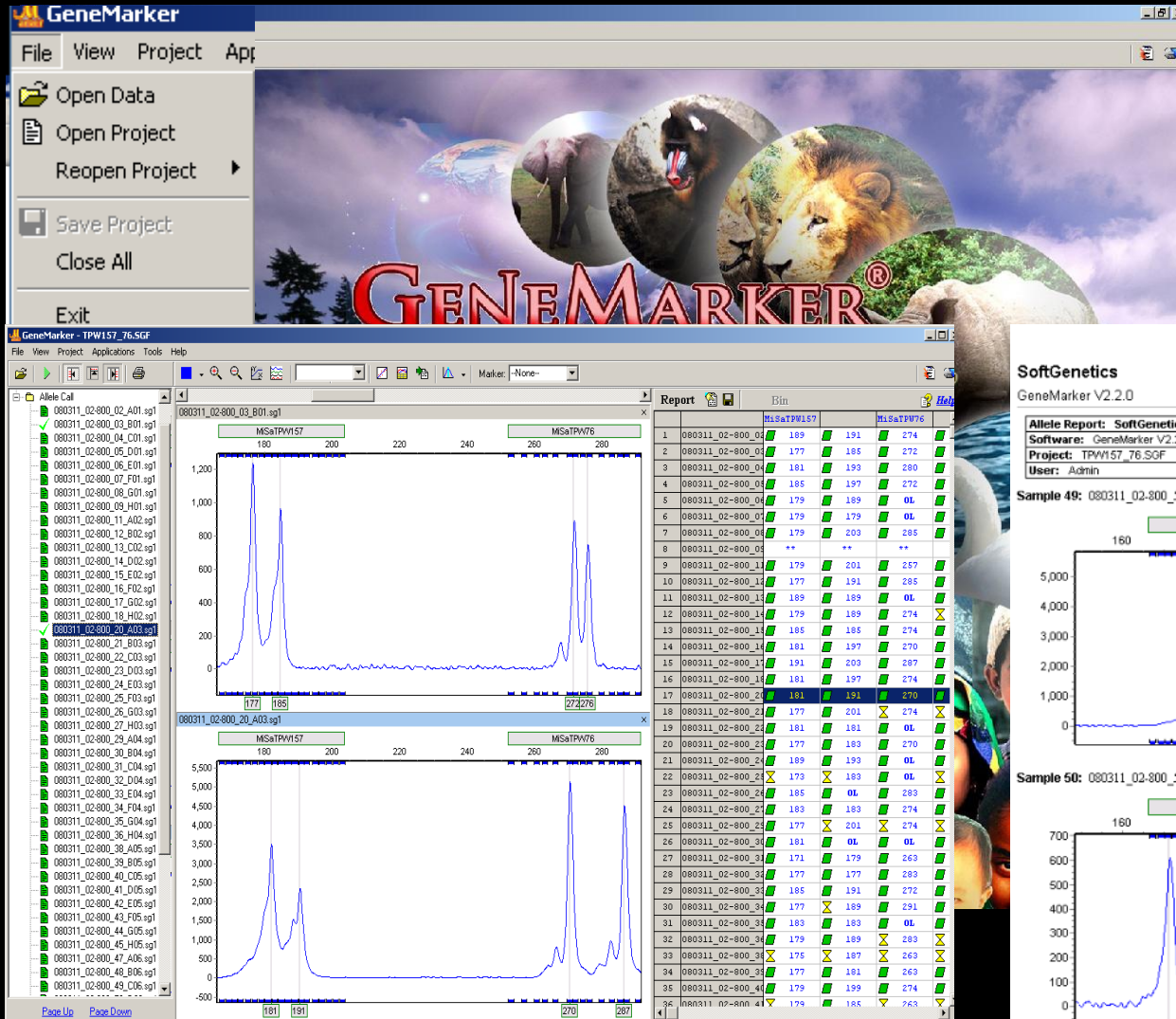


If Allele Calls are not necessary for the data set the sizing, peak height and area may be obtained directly in JelMarker. 



Export trace files from JelMarker → File → Save

Automated Genotyping Using GeneMarker® Software Import Converted Fragment Data



Automated Genotyping

SoftGenetics

GeneMarker V2.2.0

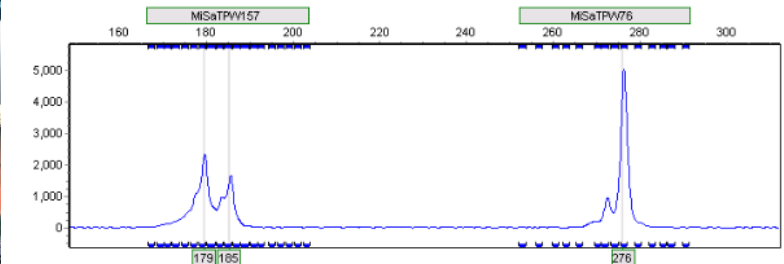
Allele Report

8/22/2011 10:58:58 AM

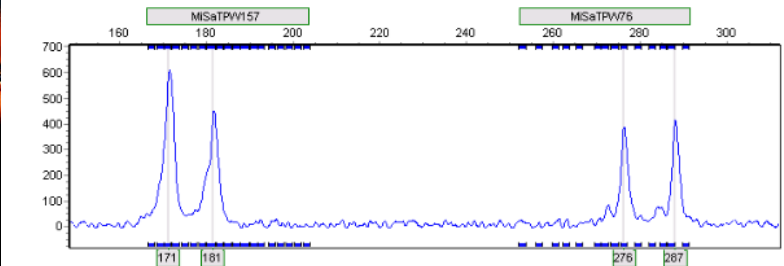
Page 17

Allele Report: SoftGenetics	
Software: GeneMarker V2.2.0	Template: MISA1PW02
Project: TPW157_76.SOF	Panel: 02Multiplex
User: Admin	

Sample 49: 080311_02-800_56_A07.sgl Run date and time: - 00:00:00 -> - 00:00:00



Sample 50: 080311_02-800_57_B07.sgl Run date and time: - 00:00:00 -> - 00:00:00



Customize Print or Spread
Sheet Reports

In Conclusion JelMarker Software:

Easily Convert Slab PAGE Image to Standard Chromatograph Format files

Import into GeneMarker Software for Accurate Size and Allele Calling

Flexible Reporting Options

Please See additional GeneMarker Webinars:

Complete Genotype by Merging results of replicate sample multiplexes

Cluster Analysis for Automated Dendrogram Construction

Kinship Analysis

Replicate sample and Kin Database Search

Parentage Testing / Verification

For More Information or to download a
free 30-day trial, go to
www.softgenetics.com

JelMarker™ Image Reading and Conversion
Software
Introductory Webinar

or e-mail info@softgenetics.com

Not intended for animal or human diagnostic use

**Trademarks are the property of their respective owners.*

SOFTGENETICS®
Software PowerTools for Genetic Analysis