

Cup Horn

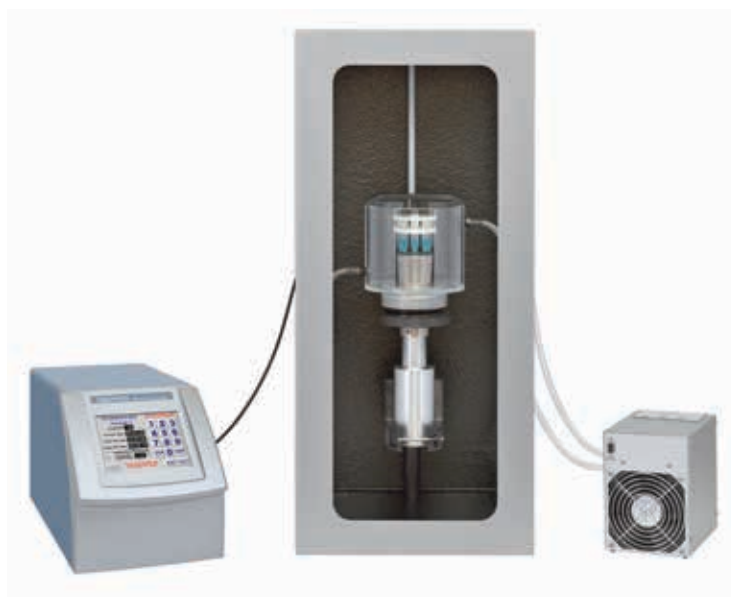
A Cup Horn offers indirect sonication and functions as a high intensity ultrasonic water bath. Multiple samples can be processed in sealed tubes eliminating cross contamination or aerosol issues.

The horn is mounted within an acrylic cup and the cup is filled with water. Sample tubes are placed in a rack at a fixed distance above the ultrasonic horn. Cavitation is produced in the water, processing the samples within the tubes. The #440 tube rack is included with the Cup Horn. This rack is made for 1.5ml polystyrene tubes which are proven to process samples more efficiently than 1.5ml polypropylene tubes.

Sonication generates heat so ports for cooling are located on each side of the cup. The #4900 Chiller is recommended for maintaining both the water temperature and water level within the Cup Horn. Maintaining a fixed water level is extremely important and only the Qsonica chiller can accurately control this variable.

The Sound Enclosure is highly recommended for all Cup Horn users. In addition to reducing sonication noise to safe levels, it securely holds the Cup Horn in place. The Sound Enclosure features ports on either side to allow coolant tubing to pass from the Cup Horn to the Chiller.

Note: Selecting the appropriate size and type of sample tube will greatly improve results. Contact Qsonica for application assistance



Part # 431C2
 Inner Diameter of Cup: 5.5"
 Diameter of Horn: 2.5"
 Tube Rack #440
 (8 Tubes) is Included

Optional Tube Racks



Part #	Description
Tube Holder # 440	8 Tube Holder (1.5ml Polystyrene tubes)
Tube Holder # 451	8 Tube Holder (1.5ml Polypropylene tubes)
Tube Holder # 449	12 Tube Holder (600ul PCR tubes)
Tube Holder # 445	24 Tube Holder (300ul PCR tubes)